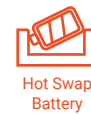


CW-6**MAINTENANCE IN FRANCE****MOBILE DEVICE DESIGNED FOR TRACEABILITY**

- Android 7.0 / Windows 10
- Processor Mediatek 8735b - A53 1.1 GHz / Intel Cherrytrail Z8350
- Tested to standard MIL STD 810G, drop resistance 1.2m
- IP65, Tumble test 1000 fois x 1m
- Removable Battery 5000mAh
- Gorilla Glass 3 on screen
- Multitouch capacitive screen 5 points
- 4G LTE WWAN connectivity
- Handstrap

**AVAILABLE ACCESSORIES**

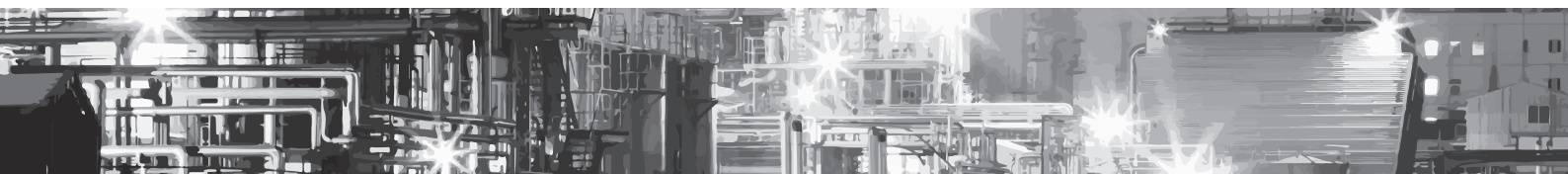
- NFC/RFID/Barcode 2D (Honeywell)
- Charging dock for 2 tablets
- Additional Battery



Charging dock



Hanstrap





PRODUCT SPECIFICATION

SOFTWARE	Android 7.0 / Windows 10	CAMERA	2MP front camera (Comp. Windows Hello) Auto focus, flash Rear camera : Android- 8MP / Windows- 5MP
DURABILITY	MIL-STD-810G (Multiple 4' / 1.2m Drops) 26 times all corners and sides with single tablet while operating IP65 500 times x 1m tumble test Gorilla Glass 3	WIRELESS	Optional 4G/LTE GPS/GLONASS Wi-Fi 802.11a/b/g/n Android- Bluetooth® 4.0 / Windows- Bluetooth® 4.1
CPU	Mediatek 8735b- 4x ARM A53 1.1 GHz (Android) Intel Cherrytrail Z8350 (Windows)	POWER SUPPLY	Hot swappable external battery -3.7V, 5000 mAh Battery operation - up to 8 hours (HD video playback test, average brightness at 200 lumens and sound at 50%)
MEMORY	LPDDR3 2GB	SENSORS	Optional 1D/2D Barcode Reader Optional NFC / RFID reader Infra-red Compass Ambient light sensor Proximity sensor Gravity sensor
STORAGE	Android 16GB / Windows 32 GB	DIMENSIONS	7.29" x 3.67" x 0.81" (185mm x 93mm x 20.7mm)
DISPLAY	6" - 720 x 1280 IPS	WEIGHT	0.83 lbs (380g)
AUDIO	1 digital microphone 1 integrated speaker	ACCESSORIES	External battery Replacement handstrap Dock for 2 tablets
SCREEN	5-point multi-touch and capacitive stylus, support glove mode and wet-touch mode		
INTERFACES	Docking connector (pogo pin) Micro USB 2.0 Power supply connector 3.5mm audio jack SIM card reader Micro SDXC card reader		