

THE PANEL PC IN POS VERSION

COWORKER SMART PANEL



SMART SOLUTIONS POS



Discover a new vision of the panel PC: the Coworker Smart Panel. More compact, more design, reduced in connectivity, and yet, with all the needed capabilities for a practical and easy use.

Our Smart Panel is perfectly suited in sale and service sites' use. It is compatible with many peripherals: electronic payment terminal, cash drawer or barcode scanner. It fits perfectly in your sales area and guarantees a better efficiency and productivity.

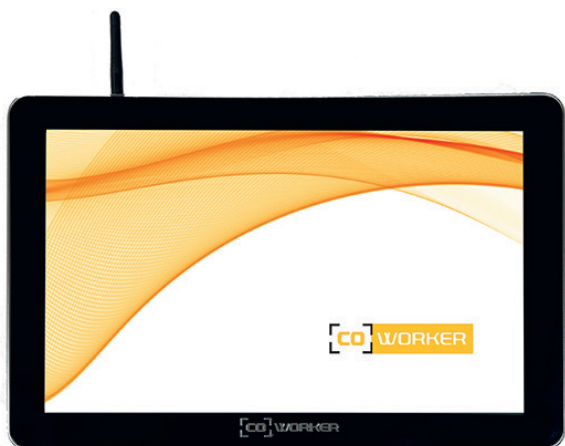
With its solid and elegant cash register stand, the COWORKER cash register is equipped with all the features adapted to your job's constraints.

Available under Windows, Chrome OS or even Linux, our COWORKER cash register is compatible with most POS software.

The capacitive Multi-Touch screen equipped with a reinforced slab will also suits an intensive use. contraintes métier.

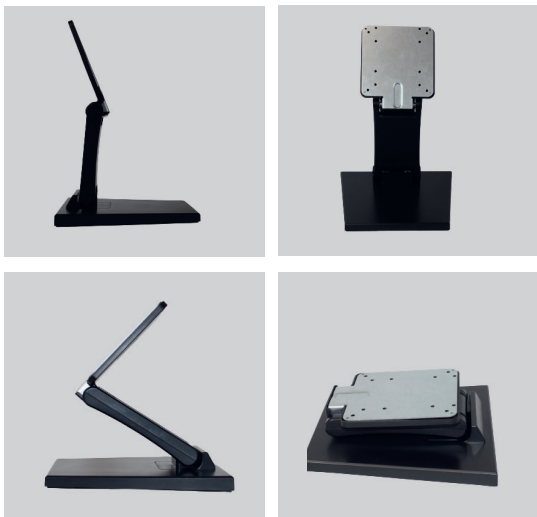
www.coworker-device.com





CW SMART-P15

15.6" screen (16:9)
Windows 10 / Linux / Chrome OS
Intel Core i5 processor
Compatible with all POS software

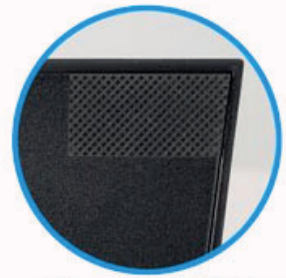


CASE STAND

Multi-use swivel mount
VESA dimension
10" to 22" inches
Adjustable in height
Rotating
Non-skid
To be screwed
Solid joints



VESA dimension



Non-skid 92001



15" to 22"



Solid base (screws)



Adjustable in height



Flexible and adjustable



Solid joints

SPECIFICATIONS PRODUIT SMART PANEL

SOFTWARE	Windows 10 / Linux / Chrome OS	INTERFACES	USB 2.0 x 2 / USB 3.0 x 2 Power supply connector VGA / HDMI / LAN Port
SCREEN	Capacitive 10 point multi-touch screen	WIRELESS	WIFI 802.11a/b/g/n
PROCESSOR	Intel Core i5	POWER SUPPLY	220V AC 50/60Hz
RAM	8G	ADDITIONAL ACCESSORIES	Control desk terminal Retractable ceiling mount Mobile desk arm Celling mount Pneumatic desk stand
STORAGE	SSD 128G / 256G / 512G		
AUDIO	Speakers / Microphone / Headphone jack		

www.coworker-device.com

COWORKER SMART SOLUTIONS POS

FOR ALL TYPES OF BUSINESSES



MODERN DESIGN, SMALL
FOOTPRINT

CROSS-PLATFORM
WINDOWS & LINUX

