



USER'S MANUAL COWORKER – CW 12





Table of contents

CHAPTER 1: GETTING STARTED	3
Introduction:	3
Specifications:	4
Overview of the Coworker tablet:	5
Start up:	5
CHAPTER 2 : USING COWORKER TABLETS	6
1- Using the touch function:	6
2- Using the camera:	6
3- Battery:.....	6
Checking the charge level:	6
Inserting the battery:.....	7
Changing the battery (Hot swap):.....	7
4- Using the Bluetooth:	7
5- Using the Wi-Fi:.....	8
6- Using the SIM or SD card reader:	9
7- Using cellular connectivity (optional):	10
8- Utilisation du récepteur GPS :	10
9- Using the barcode reader (optional):.....	12
➤ Configuration of the barcode reader:.....	12
➤ Supported barcode types:	13
10- Using the NFC reader (optional):.....	13
CHAPTER 3: MAINTENANCE OF YOUR COWORKER	15
General maintenance:	15
Screen maintenance:	15
Screen calibration:	15



CHAPTER 1: GETTING STARTED

Thank you for choosing the Coworker CW12 tablet to support you in your activity.

To ensure an optimum performance of this product, please read this user's manual carefully.

Introduction:

Read the safety instructions carefully and thoroughly. All cautions and warnings on the equipment or user's manual should be noted.

Keep this equipment away from humidity and high temperatures.

Lay this equipment on a stable surface before setting it up.

The openings on the frame are used for air convection and to prevent the equipment from overheating. Do not cover the openings.

Do not leave the equipment in an unconditioned environment with a storage temperature above 60°C or below -20°C, which may damage the equipment.

This unit should not be used under a maximum ambient temperature of 50°C (120°F) or under 60°C (140°F) for light loading applications.

The hereunder are requirements of the battery storage:

- If the storage duration is within 3 months, please keep the temperature between -20 °C ~45 °C; If the storage duration is above 3 months but within 1 year, please keep the temperature at 23°C± 2°C.
- The battery capacity should remain at 30 ± 5%.
- The storage humidity should remain at 65 ± 25%RH.
- The battery charging temperature should be between 10 °C ~45 °C, the discharging temperature should be between -20°C ~60°C.
- For the maximum battery discharging performance, please keep the storage temperature at 25°C.

Make sure the power voltage is within safety range and has been adjusted properly to the value of 100~240V before connecting the equipment to the power outlet.

Always unplug the AC power cord before adding a cord or installing any module to the equipment.

Always disconnect the AC power cord or uninstall the battery pack or switch off the wall socket if the equipment shall be left unused for a certain time to achieve zero energy consumption.

Place the power cord in a way that people are unlikely to step on it. Do not place anything on top of the power cord.

Always keep strong magnetic or electrical objects away from the tablet.

Never put liquid into the opening, that could damage the equipment or cause an electrical shock.



If any of the following situations arise, get the equipment checked by a certified technician:

- The power cord or plug is damaged.
- Liquid has penetrated into the equipment.
- The equipment has been exposed to moisture.
- The equipment has not worked well or you can not get it work according to User's Manual.
- The equipment has been dropped and damaged.
- The equipment has obvious signs of breakage.

Specifications:

The Coworker CW-12 tablets are equipped with the following specifications:

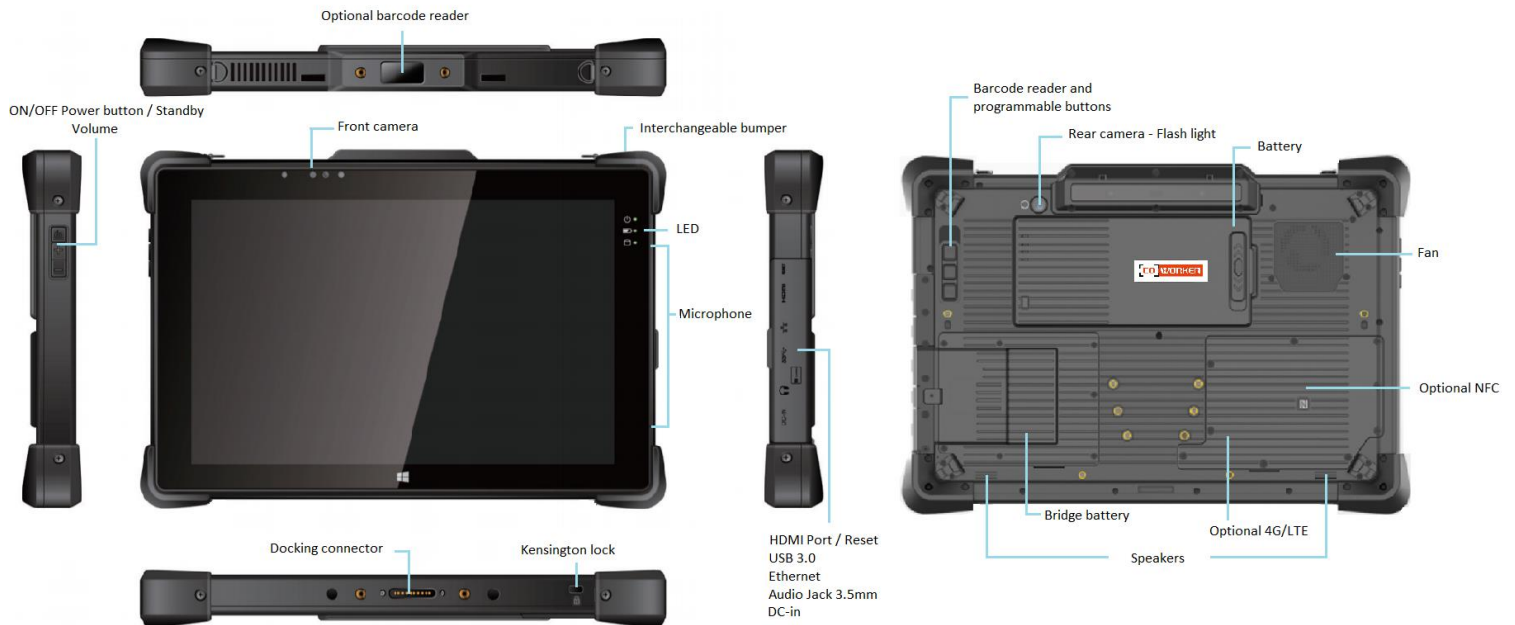
- Processor Intel® Core i5 7200U / Core i7 7500U
- Windows 10 Pro
- Tested to MIL STD 810G standard, drop resistance 1.2m
- IP65, Tumble test 1m, 200 fois
- Hot swap battery
- Hardware encryption TPM 2.0
- LAN Ethernet 10/100/1000 (PXE support)

Available options:

- Stylus, handstrap and briefcase handle
- 4G LTE multi career with GPS
- NFC / RFID reader / Barcode reader 2D (Honeywell)
- Mobile dock, office dock, snap mount and battery charger



Overview of the Coworker tablet:



Start up:

To turn the tablet on, press and hold the power button on the left side of the tablet for 3 seconds.

For the first use of the Coworker tablet, follow the instructions that come up on the tablet. Once the settings have been done, the desktop opens.

Now, the tablet can be used, following our terms of use.



CHAPTER 2 : USING COWORKER TABLETS

1- Using the touch function:

The Coworker tablets have a 10 point multi touch capacitive display.
The touch screen can be used with gloves.



2- Using the camera:

Take photos and record videos using the various modes and available settings.


On the taskbar, press



Taking pictures or recording videos:

Press  to take a picture or on  to record a video.

- To zoom in, move two fingers away from each other on the screen.
- To zoom out, bring them closer together.

To use the front camera, press 

3- Battery:

- Standard battery capacity: 7.6V, 6200mAh, 47.12Wh.

Checking the charge level:

- Under Windows: To check the battery charge level, you have to click once on the battery logo (bottom right of the taskbar).



Inserting the battery:

Please carefully follow these instructions for the battery installation (as below):

1. First insert the left side of the battery
2. Push down the right side of the battery
3. Slide the lock button to the top position



Changing the battery (Hot swap):





- The tablet is equipped with a backup battery, it takes over during 2 minutes when changing the battery.
- When the battery is removed, the screen shuts off but the tablet remains active, when the new battery is inserted the display turns on again and the tablet can be used normally.

4- Using the Bluetooth:

You can connect a variety of Bluetooth devices to your tablet, including: mouse, phones, speakers and much more. To start using the Bluetooth, you must first pair your Bluetooth device with your tablet.





Examples:

To connect an audio device:

1. Turn on your Bluetooth audio device and make it visible.
The procedure for making it visible depends on the audio device. Check the audio device or visit the manufacturer's web site to learn how to do this.
2. Turn on the Bluetooth on your tablet if you have not already done so. To do this, on the taskbar, select notification center >  Bluetooth 
select notification center >  and choose the name of the device.
3. In the notification center, select connect>  and choose the name of the device.
4. Follow all the instructions on the screen. Otherwise, you're finished and you're connecting. Generally, your Bluetooth device and tablet will automatically connect when the two devices are within range of each other and turned on.



To connect a device:

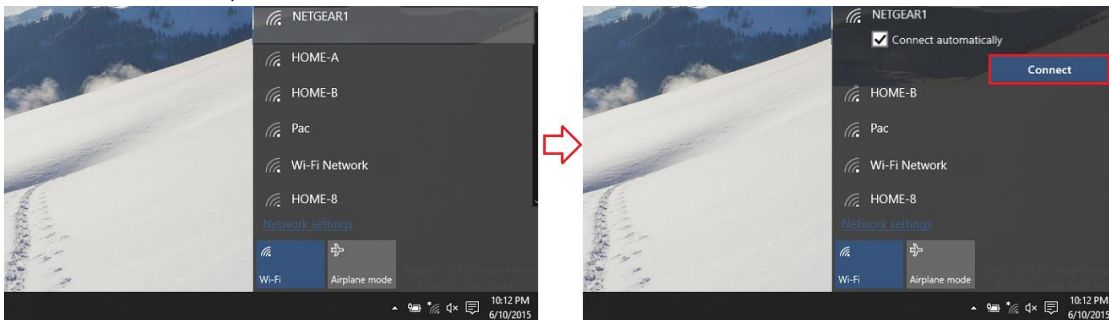
1. Turn on your device and make it visible.
2. Select the start button , and then choose settings  > devices  > Bluetooth and other devices .
3. Turn on the Bluetooth, then select add a Bluetooth device or another device > Bluetooth. Choose the device and follow the additional instructions, as if so, then select OK.

5- Using the Wi-Fi:

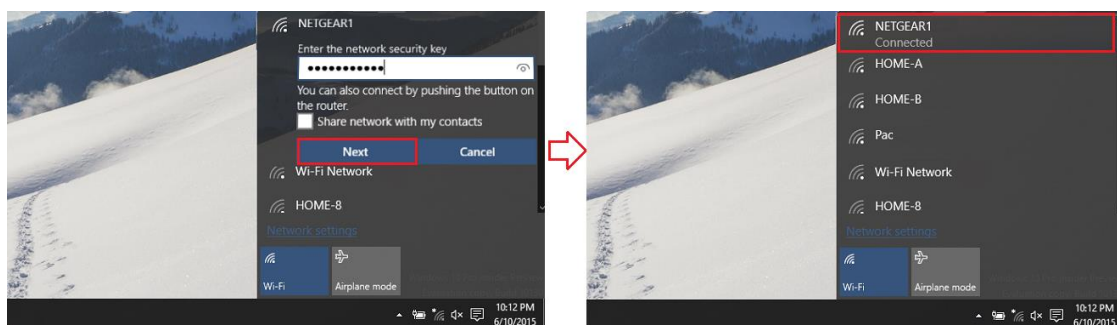
In the taskbar, double click on the Wi-Fi icon in the bottom right corner.



1. Select your network (company or box) from the list of Wi-Fi networks scanned;
2. Click on « **Connect** »;



3. Enter the network security key;
4. Click on « **Next** »;
5. When the connection is established on your network, the word « **Connected** » appears.

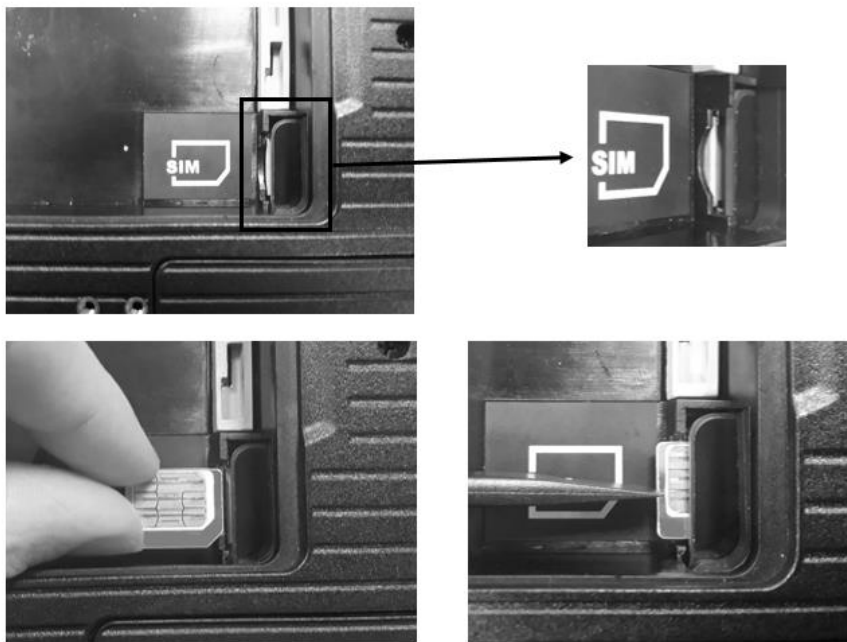


6- Using the SIM or SD card reader:

- The SIM card/or SD card must be inserted with the tablet turned off so that it can be properly detected.
- The SIM card and SD card slot is in the battery compartment.
- A logo on the plastic indicates the direction of insertion.



Example of SIM card insertion:




7- Using cellular connectivity (optional):

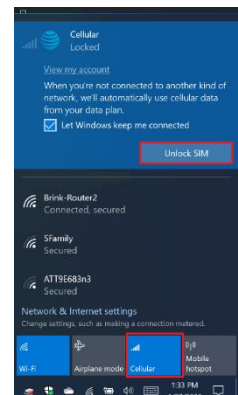
If you have purchased your Coworker with the optional mobile broadband module, you can connect it to high speed mobile phone network around the world, with the mobile broadband module and an internet package subscribed with one or more mobile phone operators, you will have full access to the internet.

Note:

Before connecting to a mobile broadband network, you must have an active account with a mobile phone operator and obtain a SIM card for mobile broadband access.

1. Turn the tablet off, insert your SIM card and turn the tablet back on. (Refer to the previous paragraph).
2. Activate the mobile broadband function as follows:

- a. Press the network icon .
- b. In the network window, enable cellular.
- c. Press the cellular icon to display your service provider.
- d. Press the connect button to establish a connection, and enter the PIN code.



If you want to change the operator, please follow the instructions below:

- a. Press the network icon
- b. Press Network & Internet settings.
- c. Tap on 'Network and Internet' then tap on 'Cellular Network'.
- d. Tap "Advanced options".
- e. Select your operator from the 'Choose Default Internet APN' drop-down list.

8- Using GPS :

Whether you're traveling by car, by foot or by bus, maps for Windows 10 tells you how to reach your destination. Download offline maps before you leave so you can search and get directions, even without internet access.

➤ How to use GPS :

Get directions to the address, the landmark or the business of your choice. The maps application even guides you to the desired address.

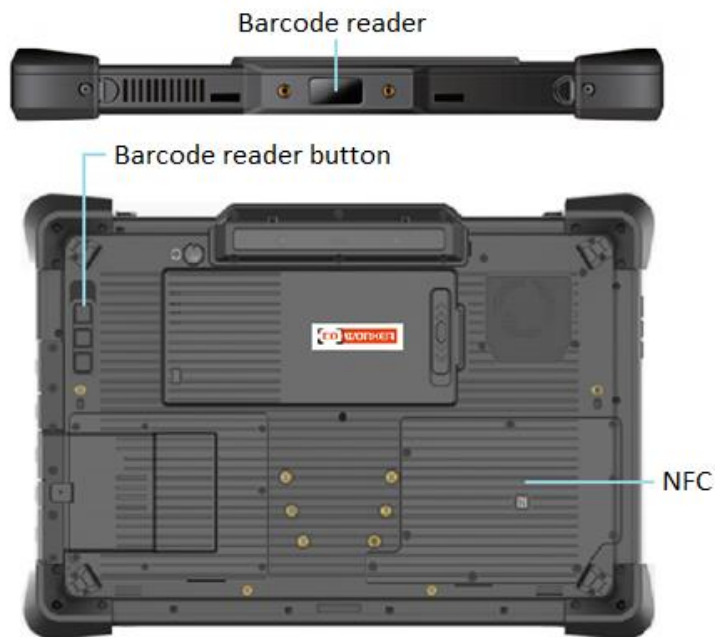
1. Click the start button, and then click maps.
2. Select Directions.
3. If you wish, you can change the transport mode (on foot or by public transport), and select preferences to avoid items such as tolls or traffic jams, or to obtain a route with a public transport with less walking.
4. In fields A (starting point) and B (destination), start typing an address, a city name, the name of a company. Select the desired location from the choices that appear.

5. If you need to make multiple stops, select “add destination”. You can also press and hold down (or right click) on the map, then select and add the destination. Drag the destinations to rearrange them in the list.
6. Select « Get directions ».
7. To listen to the detailed itinerary during your trip, select OK.
8. Or, to print it, select more > **print**.

➤ Offline Maps:

Download maps via Wi-Fi before you leave, then use the maps application to search and get directions, even when you are not connected to the internet.

1. Close the maps application, select the start button, and then choose settings > **Applications** > **Offline maps**.
2. Select **Download maps**, then choose the region map you wish to obtain.





9- Using the barcode reader (optional):

A barcode reader can be considered as a replacement for the keyboard. The code contains a number of pieces of information that are not readable by the naked eye.

Open a text editor and use the barcode reader by passing the reader over any barcode you will see the different information on the screen. It's like someone's been writing on the keyboard.

Actually, a barcode scanner works like a keyboard: the scanned barcode is transformed into a string of characters (example: 1353453452311) sent to the software.

- Configuration of the barcode reader:



Standard Product Defaults

Keyboard Country:

Your keyboard layout default is a US keyboard. To change this layout, scan the appropriate keyboard country code.



Belgium



Germany / Austria



Norway



Denmark



Great Britain



Spain



Finland



Italy



Switzerland



France



USA (Default)

Suffix:

If you want a carriage return after the barcode, scan the **Add CR Suffix** bar code. To add a tab after the barcode, scan the **Add Tab Suffix** bar code. Otherwise, scan the **Remove Suffix** bar code to remove the suffixes.



Add CR Suffix



Add Tab Suffix



Remove Suffix



➤ Supported barcode types:

Linear:

Codabar, Code 11, Code 128, Code 2 of 5, Code 39, Code 93 and 93i, EAN/JAN-13, EAN/JAN 8, IATA Code 2 of 5, Interleaved 2 of 5, Matrix 2 of 5, MSI, GS1 Databar, UPC-A, UPC E, UPC-A/EAN-13 with Extended coupon Code, Coupon GS1 Code 32(PARAF), EAN-UCC Emulation

2D Stacked:

Codablock A, Codablock F, PDF417, MicroPDF417

2D Matrix:



Aztec Code, Data Matrix, MaxiCode, QR Code, Chinese Sensible (Han Xin)
Postal codes: Australian Post, British Post, Canadian Post, China Post, Japanese Post, Korea Post, Netherlands Post, Planet Code, Postnet

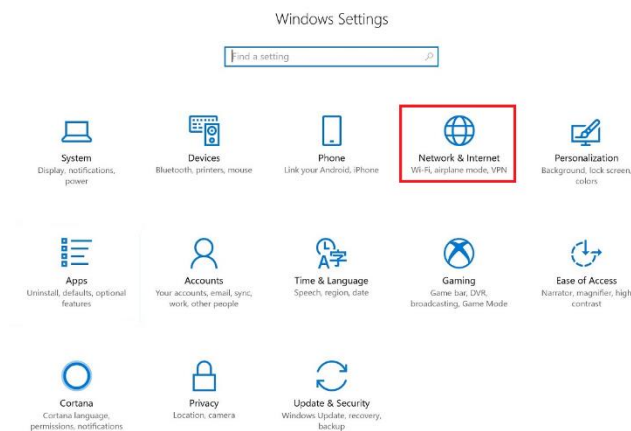
10- Using the NFC reader (optional):

The reader is located at the back of the tablet (see picture), you have to pass a nfc tag in front of the reader in order to read it.

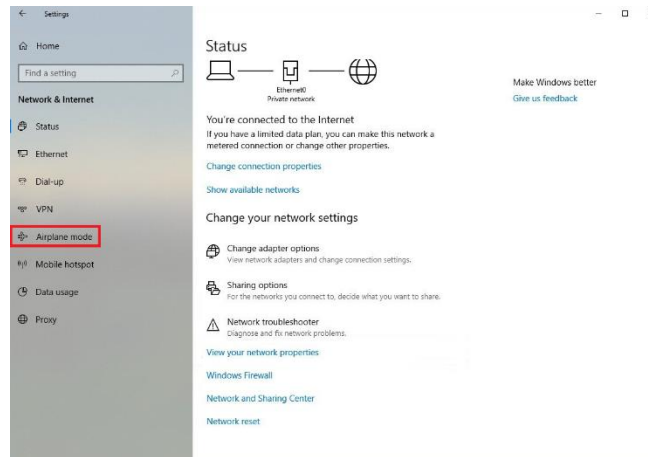
Concerning the interpretation of the reading, it will require a third party software (not integrated with the tablet).

If you want to enable or disable the NFC option:

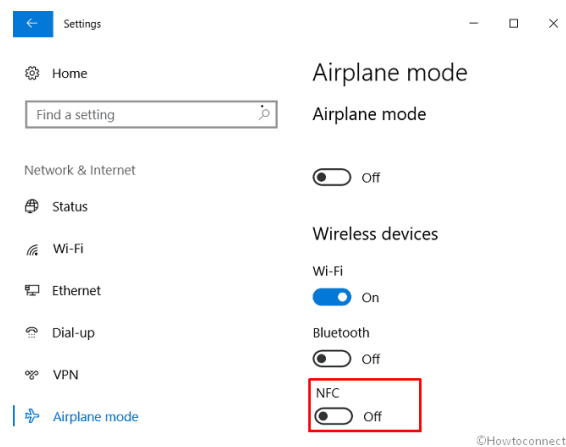
- Go to the start menu 
- Click on the “gear” to access the Windows setting 
- Click on « network and internet »



- Go to Airplane mode



- Click on NFC to enable or disable the NFC option.





CHAPTER 3: MAINTENANCE OF YOUR COWORKER

General maintenance:

- Avoid exposing the tablet to extreme temperatures, impact, liquids and strong magnetic fields.
- Do not place heavy objects on the tablet.
- If you have to put the tablet aside for a long time, unplug the AC adapter and remove the battery, after partially discharging it.
- Do not disassemble the tablet. **This would void your warranty.**

Screen maintenance:

Follow these tips to keep your screen clean:

- Fingerprints and most stains can be removed from the screen surface with a soft cloth.
- If necessary, use a cleaning product to clean the screen, spray the product on a cloth, and then wipe the screen. Never spray directly on the screen surface or use abrasive cleaners.
- If a liquid is spilt on the screen, wipe it immediately with a soft cloth.
- Only use a bumper pen. Any other object could damage the screen surface.
- When transporting the tablet, use a holster to protect the screen from unnecessary contact.
- Cover the screen with a protective film. The new tablet already has one, remember to change it if it is damaged.
- Avoid exposing the screen to direct sunlight for long periods of time.

Screen calibration:

- ⇒ Open the control panel.
- ⇒ Go to hardware and audio.
- ⇒ Then in tablet pc parameters.
- ⇒ A new window opens with a calibrate button.
- ⇒ In order to be able to calibrate the complete display, you have to turn the tablet portrait ways up.