



# PRODUCT RANGE

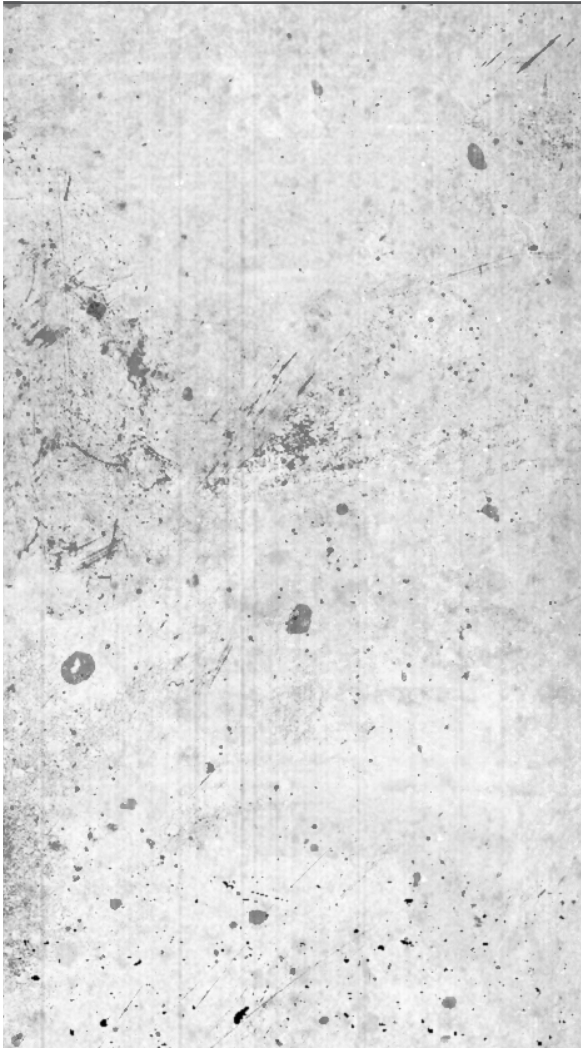
## RUGGED TABLETS



A concentrate of technologies  
in one rugged tablet.



# TABLE OF CONTENTS



**INTRODUCTION 04**

**CW-6 08**

**CW-868 07**

**CW-8 / CW-10 08**

**CW-S10 09**

**CW-12 10**

**CW-H10 / CW-F10 11**

**CW-7 12**

**CW-10MILA 13**

**CW-7EX 14**

**CW-10EX 15**



After 15 years of integrating mobile equipment for manufacturers, our industrial experience naturally led us to design and produce tools adapted to all stages of production.

From design to management and production control, we have developed digital collaboration tools, and the name of the brand : **[CO] WORKER** seemed obvious.

*Olivier LOUIS - PDG*



## A FRENCH BRAND

Coworker© was created from the collaboration between two companies: MSi (Micro Star International) and Yatoo. MSi is one of the three largest manufacturers of computer products in the world, specialised in high-end products and renown for the reliability of its components. Yatoo is a specialist in mobility since 2001 and has developed its know-how in assembly, engineering and maintenance of rugged tablets in the French and European market.

The quality of MSi's products combined with Yatoo's knowledge of the rugged tablet market led to the idea that an even better response to customers' needs was possible. The challenge was to find a balance between the durability of the products, the reliability of the components (to limit failure rates), without compromising on performance and functionality and within a budget adapted to the market's needs. The Coworker© brand was created.

Since then, we have been offering products from the world's best manufacturing lines, in compliance with the specifications drawn up: concerning performance, stability of components and durability of products. The final assembly of the products as well as the maintenance are assured in France.





Coworker© is a French brand whose mission is to provide the professional market with an adapted answer to the specific needs concerning the equipment and its industrial use.

The philosophy of Coworker© is to ensure that the tools chosen represent the best balance between performance, durability and the investment made.

Launched in 2018, the first range of Coworker© products is composed of rugged tablets.





# 6 INCHES CW-6

The CW-6 is a mix between a phone and a tablet, the so-called “**fablette**”, which is equipped with a barcode reader HONEYWELL and available under Windows and Android. Its **IP65** and **MIL-STD 810G** standards make it an exceptional rugged tool. Initially intended for warehouse management, it can also be used for CMMS or CAPM software.

**ATTENTION :**  
PRODUCT IS CURRENTLY ONGOING CHANGES.

## INDUSTRIES

- Retail
- Warehousing
- Maintenance

**DATASHEET**





# 8 INCHES CW-868

A true jewel of technology and design, the CW-868 comes under Android and embeds a high-performance 4G module in its basic configuration. Its **IP68** standard allows it to withstand an immersion of **1 meter** deep for 30 minutes. With its increased autonomy of **14 hours**, it is among the most enduring of our range.

## INDUSTRIES

- Automotive
- Military
- Manufacturing

This product was originally designed for the military industry. True all-terrain, its autonomy and its very low weight will make it an essential work companion. Due to its very attractive price this tablet represents a professional and serious alternative to general public tablets.



**DATASHEET**





---

## 8 & 10 INCHES CW-8 & CW-10

---

These incredible Swiss Army knives are available under Android and Windows pro. Beyond their undeniable technical qualities, the CW-8 and CW-10 are available in several versions with customized modules (4G, barcode reader or NFC).

In addition to their desktop or mobile docking stations they also feature a hot-swappable battery and an external battery charger. As you can see whether it's for integration into any vehicle or for a more classical use, these numerous options make them the must-have of the Coworker© range.

### INDUSTRIES

- Manufacturing
- Warehousing
- Maintenance

**DATASHEET CW-8**



**DATASHEET CW-10**



CW-8



CW-10





# 10 INCHES CW-S10

*"Try it and you will love it!"*

The CW-S10 is the queen of its category, a tablet that brings together all the latest embedded technologies. In addition to the classical options (4G, barcode reader or NFC), it has a wifi 6.0 and a Bluetooth 5.2.

## INDUSTRIES

- Manufacturing
- Aeronautics
- Military
- Construction

Perfectly compatible with indoor and outdoor use, it is the most complete tablet on the market thanks to its various accessories. Only under Windows pro, it is available with 2 processors: Celeron N4120 or Pentium last generation N5030.





# 12 INCHES CW-12

This best-seller is a must-have. The 12" tablet available under Windows pro is equipped with a Core i5 which will give you complete satisfaction. Its robustness gives it a durability highly sought after in the industrial segment. Like the CW-8 and CW-10, this tablet is compatible with an exhaustive range of accessories. On-demand modules like : hard disk size, 8 to 16 GB RAM, 4G, barcode reader or NFC, can be easily added.

## INDUSTRIES

- Warehousing
- Military
- Automotive
- Vehicle expertise

**DATASHEET**





# 10 INCHES CW-F10 & CW-H10

Two gems of technology. Whether for industrial use with the CW-F10 or for medical use with the CW-H10, these two fanless models are available in Celeron or Core i5.

Their designs include a large handle on top for easy handling. On-demand modules like : hard drive size, 4G, barcode reader or NFC can be easily added.

## INDUSTRIES

- Medical
- Manufacturing

The CW-H10 tablet, with its antimicrobial coating, is the only medical tablet on the market that has all the necessary certifications for projects in the medical field.

**DATASHEET CW-H10**



**DATASHEET CW-F10**



CW-H10



CW-F10





---

## NEW PRODUCT RANGE

---

*"No compromise - tough, yet  
compact and powerful."*

---



**10.1 POUCES  
1000 NITS  
LISIBLE EN PLEIN SOLEIL**



## 7 INCHES CW-7

This little wonder available under Android is designed for an outdoor use thanks to its 1000 nits. It comes with a 4G module in its basic configuration.

### INDUSTRIES

- Vehicle expertise
- Maintenance
- Retail

Its compact and ultra-rugged form-factor makes it an ideal tablet for any activity in the field. The ultra-competitive price allows you to acquire a reliable and suitable model.







## 10 INCHES CW-10MILA

This 10" tablet available under Android is destined for outdoor use thanks to its 1000 nits. It comes with a 4G module in its basic configuration.

Equipped with an NFC module on the front, this tablet is perfect for reading badges. In addition, its ultra-thin design contrasts with its robustness. A value for money ratio rarely equaled.

### INDUSTRIES

- Public transportation
- Manufacturing
- Retail
- Vehicle expertise

**DATASHEET**







## ATEX 7 INCHES CW-7EX

### INDUSTRIES

- Gas
- Oil
- Pharmaceutical
- Agriculture

The exact copy of the CW-7 but certified ATEX 2.22 is a revolution due to its very aggressive price. It has the same specificities as the CW-7 with 1000 nits screen and coming with the a 4G module in its basic configuration. The gas, oil, chemical and agricultural sectors will be very interested in this model.

 **DATASHEET**





## ATEX 10 INCHES CW-10EX

The ultimate 10" ATEX tablet. The total of its options makes it the best value for money on the ATEX market. Like the CW-10MILA, it comes with a 4G module in its basic configuration.

Thanks to our experience in the field of mobility for more than 20 years we were able to offer you an unique equipment adapted to this environment in perpetual demand.

### INDUSTRIES

- Gas
- Oil
- Pharmaceutical
- Agriculture

**DATASHEET**





**Mobility & Progress**



361 Avenue des Romarins  
34130 Saint-Aunès  
+33 (0)4 99 52 68 88  
[contact@yatoo.info](mailto:contact@yatoo.info)