

# CW S-10

**POWERFULL MOBILITY**



Video

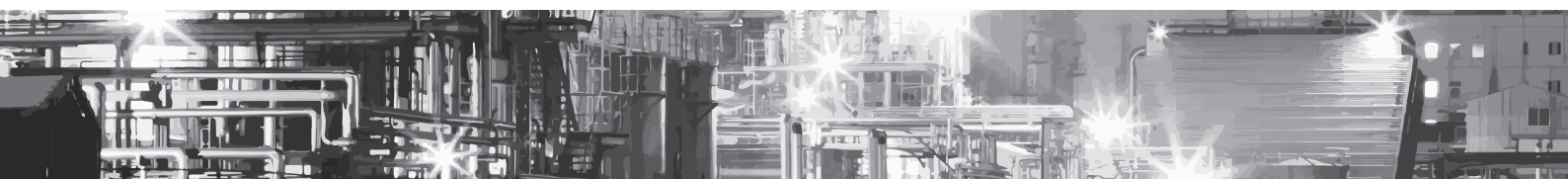
**ASSEMBLY & SERVICES IN FRANCE**

## USED IN THE FIELD, VEHICLE, AND IN THE OFFICE

- Processor Intel® Celeron N4120 Quad core / PentiumN5030
- Windows 10 Pro / Windows 11
- Tested to MIL STD 810G, drop resistance 1.2m
- IP65, Tumble test 100 times 1m
- Hot swap Battery 4800mAh
- Hardware Encryption TPM 2.0
- LAN Ethernet 10/100/1000 (PXE support)
- Handstrap (standard)

### AVAILABLE OPTIONS

- Briefcase handle and rechargeable stylus
- 4G LTE multi carrier with GPS
- Barcode reader 2D
- Mobile dock, office dock





<b>SOFTWARE</b>	Windows 10 Pro / Windows 11	<b>CAMERA</b>	2MP front camera (Windows Hello in option) 8MP rear camera, auto focus, flash Optional 3D Camera
<b>DURABILITY</b>	MIL-STD-810G (multiple drops 1.2 m) 26 times all corners and sides with single tablet while operating IP65 Tumble test 100 times x 1m Screen protection	<b>WIRELESS</b>	4G LTE optional GPS Ublox M8N integrated Intel WI-FI 6 802.11a/b/g/n/AC/AX Bluetooth® 5.2
<b>CPU</b>	Intel® Celeron N4120 Quad Core Pentium N5030	<b>POWER SUPPLY</b>	Hot-swappable battery 7.6V, 4800mAh, 36.5Wh Battery Autonomy : up to 8 hours
<b>RAM</b>	8GB	<b>SENSORS</b>	Optional 1D/2D barcode reader 9 Axis MEMS sensor (accelerometer, compass, gyroscope) Proximity Sensor
<b>STORAGE</b>	128GB SSD	<b>DIMENSIONS</b>	283.4mm x 192mm x 15mm
<b>DISPLAY</b>	10" 1920 x 1200 IPS 800 nits	<b>WEIGHT</b>	1.1 kg
<b>AUDIO</b>	1 microphone 2 integrated speakers	<b>ACCESSORIES</b>	Handstrap with stylus holder Mobile Dock Office dock AC adapter 65W (19V / 3.42A) Rechargeable stylus
<b>ENTRY</b>	10 points multi-touch and capacitive, support glove mode and wet touch mode	<b>TEMPERATURE</b>	Operating temperature -20°C to 50°C  Storage temperature -30°C to 60°C
<b>INTERFACE</b>	Docking connector 1 USB 3.0 Port 1 USB 3.1 (type C) Ethernet Port HDMI Audio Jack 3.5mm SIM card location Micro SDXC Card reader		
<b>STATUS INDICATORS</b>	On/Off, battery status		