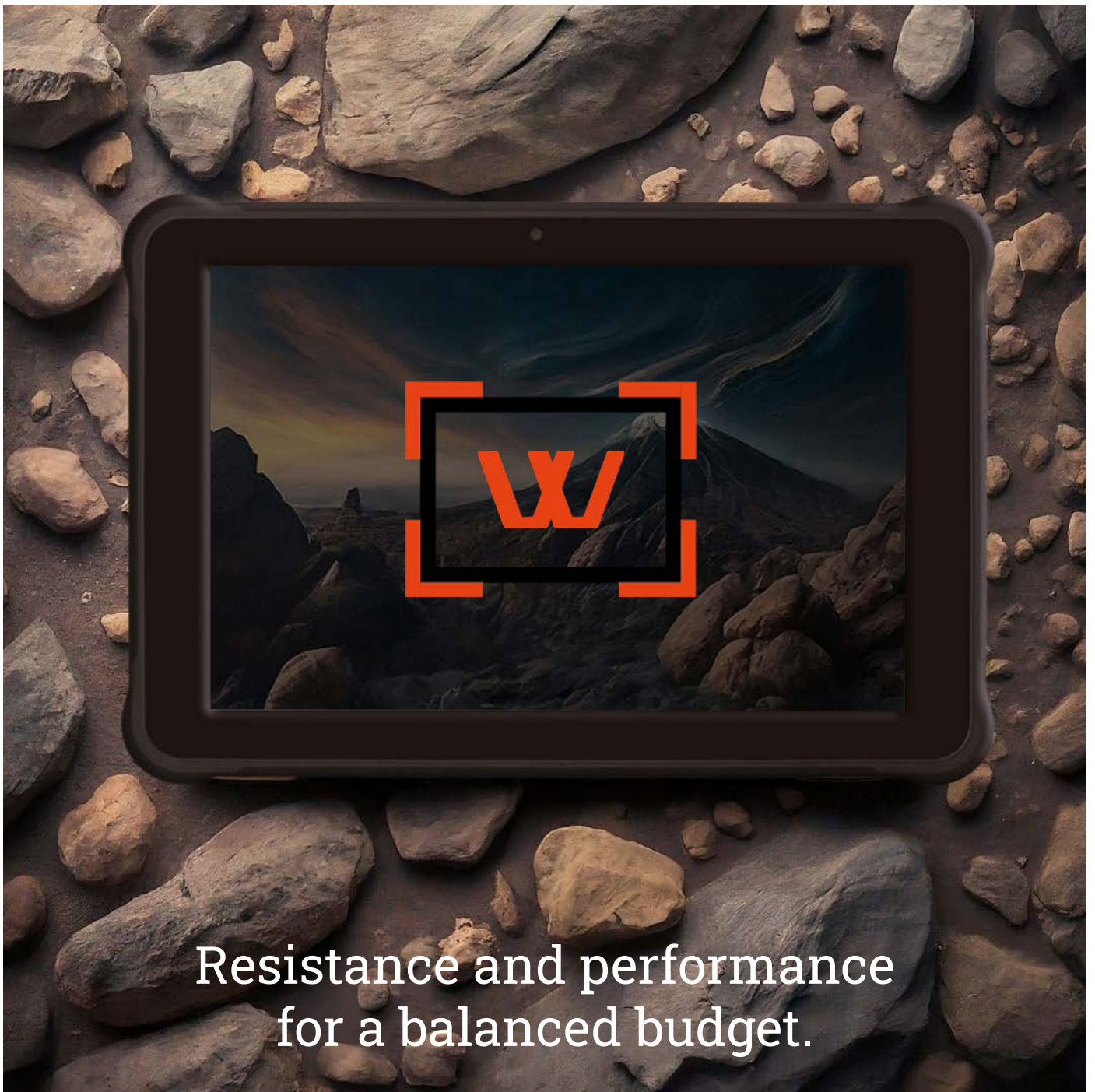




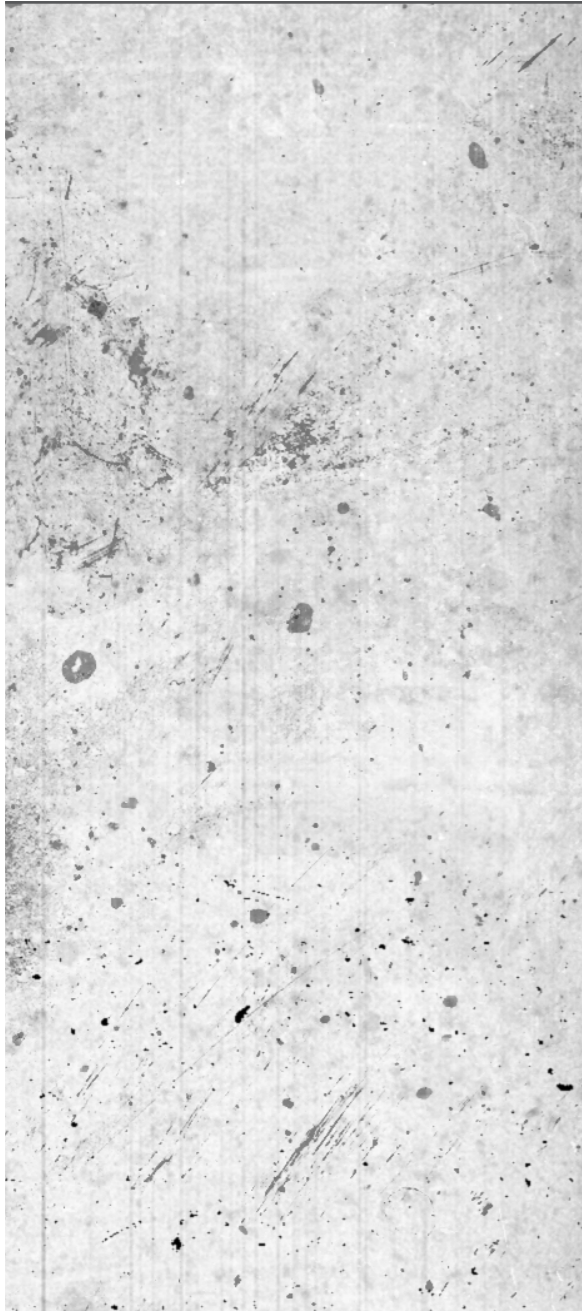
# NEW RANGE RUGGED TABLETS



Resistance and performance  
for a balanced budget.



# TABLE OF CONTENTS



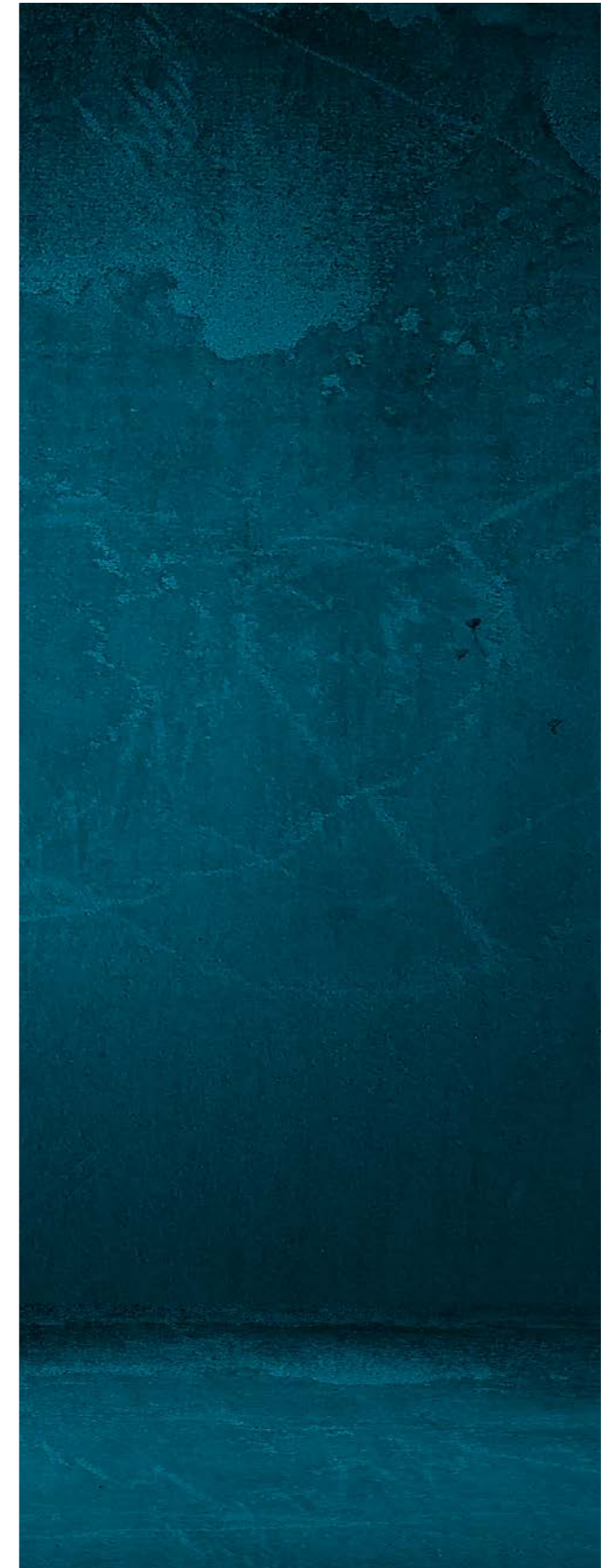
<b>INTRODUCTION</b>	<b>04</b>
<b>CW-6</b>	<b>06</b>
<b>CW-M8</b>	<b>08</b>
<b>CW-J10</b>	<b>10</b>
<b>CW-K10</b>	<b>12</b>
<b>CW-R10</b>	<b>14</b>
<b>CW-H10 / CW-F10</b>	<b>16</b>
<b>ACCESSORIES</b>	<b>17</b>
<b>CW-H10 / CW-F10</b>	
<b>CW-N12</b>	<b>18</b>
<b>ATEX RANGE</b>	<b>20</b>
<b>CW-10EX</b>	<b>22</b>
<b>CW-7EX</b>	<b>22</b>
<b>CW-6EX</b>	<b>23</b>

*After 15 years of integrating mobile equipment for manufacturers, our industrial experience naturally led us to design and produce tools adapted to all stages of production.*

*From design to management and production control, we have developed digital collaboration tools, and the name of the brand : **COWORKER** seemed obvious.*

---

*Olivier LOUIS - CEO*





---

**[CO] WORKER**  
A FRENCH BRAND

---

Coworker® is a French brand born from the desire to offer solutions adapted to the specific needs of professionals in terms of rugged tablets. Since its creation, we have been committed to providing high quality products from the best global manufacturing chains, while ensuring final assembly and maintenance in France.

Our new rugged tablet range embodies our commitment to innovation, robustness and reliability. Each tablet is designed to withstand the most extreme conditions, offering exceptional durability, outstanding performance and flawless reliability.

At Coworker, we strive to balance performance, component stability and product durability without compromise. Our goal is to meet the requirements of professionals while respecting a budget adapted to the realities of the market.

Discover our range of products and find the rugged tablet that perfectly fits your needs. Welcome to the era of robust performance with Coworker, your trusted French partner for reliable and efficient solutions.



**[CO] WORKER**  
Toujours à vos côtés

Coworker® is a French brand whose mission is to provide the professional market with an adapted answer to the specific needs concerning the equipment and its industrial use.

The philosophy of Coworker® is to ensure that the tools chosen represent the best balance between performance, durability and the investment made.

Launched in 2018, the first range of Coworker® products is composed of rugged tablets.





# 6 INCHES CW-6

**Phablet CW-6** : The perfect fusion between phone and tablet

The Coworker CW-6 phablet is the ideal solution for professionals looking for a versatile and powerful device. Running on Android 11, it combines the functionality of a phone and the robustness of a rugged tablet, creating an indispensable tool for demanding environments.



[DATASHEET](#)



## ACCESSORIES

MAGNET SNAP  
MOUNT FOR VEHICLE



CAR CHARGER



## KEY FEATURES

- **OS Android 11:** An intuitive interface and optimized performance for a smooth user experience.
- **MIL-STD 810G and IP67 standards:** Exceptional impact, dust and water resistance, ensuring unparalleled durability.
- **Additional modules:** Customize your CW-6 with modules such as an RFID reader, barcode reader or fingerprint reader.
- **6-inch ultra-bright screen:** With a brightness of 1000 nits, the screen remains readable even in full sun.
- **High performance:** Designed to handle demanding professional applications, the CW-6 delivers high performance and reliability.



## EXAMPLES OF PROFESSIONAL APPLICATIONS

- **Warehouse management:** Originally developed for warehouse management, the CW-6 facilitates operations with its RFID and barcode reading modules, optimizing inventory management and logistics.
- **Field technicians:** Its robustness and bright screen make it the perfect tool for field technicians, offering optimal visibility and resistance to difficult conditions.
- **Drivers/deliverers:** The CW-6 is ideal for drivers and deliverers, thanks to its advanced connectivity and robustness, ensuring constant and reliable communication.
- **CMMS/CAM software:** Compatible with Computer Aided Maintenance (CMMS) and Computer Aided Production (CAM) software, it enables efficient management of industrial tasks and processes.



# 8 INCHES CW-M8

## The new benchmark in performance and resistance

The rugged tablet CW-M8, equipped with Android 11, is designed for demanding professionals who require a reliable and powerful device. It incorporates a basic 4G and NFC module, providing advanced connectivity for all your operations.

Its competitive price, coupled with its advanced features and exceptional durability, makes it a professional alternative to consumer tablets, allowing businesses to benefit from a robust and powerful device without compromising on budget.



[DATASHEET](#)



## ACCESSORIES

CAR CHARGER



OFFICE DOCK



## KEY FEATURES

- **OS Android 11:** A modern and efficient interface for an optimized user experience.
- **Integrated 4G and NFC module:** Fast and secure connectivity and data transfer.
- **IP68 standard:** Immersion resistance up to 1 meter deep for 30 minutes, dust protection.
- **Impressive battery life:** Up to 15 hours of continuous use, ideal for long working days.
- **Precise touch screen:** Works perfectly in the rain, in direct sunlight, in cold weather, and even with gloves.
- **Competitive price:** A professional and serious alternative to consumer tablets at an affordable cost.



## EXAMPLES OF PROFESSIONAL APPLICATIONS

- **Working outdoors:** The CW-M8 is perfect for professionals working outdoors, thanks to its sunlight-readable display and its resistance to water and dust.
- **Logistics & transportation:** With its 4G and NFC module, the CW-M8 ensures constant connectivity, ideal for drivers, deliverers and fleet managers.
- **Industry and maintenance:** Its robustness and tactile precision make it the ideal tool for service technicians and industry professionals, even in difficult conditions.
- **Utilities and security:** Adapted to field operations, the CW-M8 provides reliable performance for emergency services, law enforcement and other utilities.



# 10 INCHES CW-J10

## The multifunctional tablet for uninterrupted productivity

The CW-J10 combines robustness and performance thanks to its powerful octa-core processor, offering a durable tablet with multifunctional extensions to meet various business needs.

With multiple ports, this tablet allows easy interaction with many devices. The ability to change the battery without turning off the device ensures continuity of work, reducing interruptions and increasing productivity. The CW-J10 has various accessories for maximum adaptability.

## ACCESSORIES\*

### OFFICE DOCK



### MOBILE DOCK



### STYLUS



DATASHEET



\*For full list of accessories, refer to datasheet.



## KEY FEATURES

- **OS Android 13:** (6 GB RAM + 128 GB ROM) for smooth and efficient performance.
- **Multifunctional extensions:** NFC, barcode reader, UHF RFID, fingerprint reader for simplified data collection.
- **IP67 standard:** Protection against dust and water jets, ensuring durability in demanding environments.
- **Multiple ports:** Fast DC charging, RJ45 port, SIM card slot, 3.5mm headphone jack, COM port or full-size USB ports for easy interaction with various devices like printers, USB sticks, keyboards, etc.



## EXAMPLES OF PROFESSIONAL APPLICATIONS

- **Technicians and field interventions:** With its robustness and multiple accessories, the CW-J10 is ideal for technicians and professionals working in the field. It ensures reliable performance even in the most difficult conditions, which is essential for interventions in outdoor or industrial environments.
- **Industry & logistics:** With advanced connectivity capabilities and barcode reader, NFC and UHF RFID options, this tablet is perfect for industrial and logistics environments. It enables efficient inventory management, fast barcode reading and RFID identification.
- **Commerce and distribution:** The CW-J10 is a valuable asset for the retail and distribution sector. It enables seamless transaction management, real-time inventory verification and inventory updates, while offering increased mobility and flexibility through connectivity capabilities.

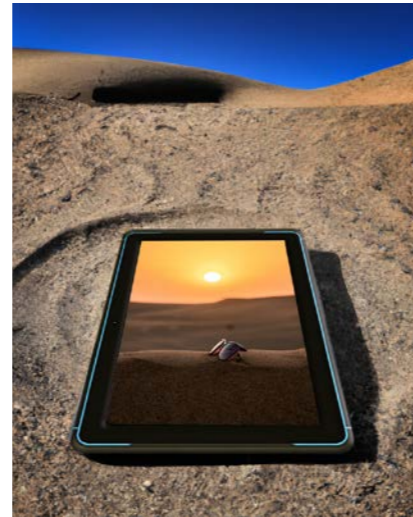


# 10 INCHES CW-K10

## High performance and extreme reliability

The CW-K10 tablet by Coworker represents much more than a mobile tool: it is a reliable and powerful ally for professionals requiring a resistant and multifunctional solution. With its IP68 certification and drop resistance, it ensures exceptional durability in the harshest environments. In addition, its remarkable lightness makes it a comfortable choice for prolonged use in the field.

Its attractive price, combined with its advanced features and remarkable durability, makes it a professional alternative to consumer tablets. The CW-K10 allows companies to have a robust and powerful device without exceeding their budget.



## KEY FEATURES

- **Operating System:** Windows 11 Pro
- **Processor:** Intel Celeron N5105
- **Multifunctional extensions:** NFC, barcode reader, UHF RFID, fingerprint reader for simplified data collection.
- **IP68 standard:** Immersion resistance up to 1 meter deep for 30 minutes, dust protection.
- **Ergonomics:** With its weight of 860g, the CW-K10 is the lightest in its category.



## EXAMPLES OF PROFESSIONAL APPLICATIONS

- **Aerospace industry:** In the aerospace industry, the CW-K10 is an essential tool for field service technicians. It offers extreme robustness and 4G LTE connectivity to access critical data and perform real-time diagnostics.
- **Automotive industry:** For automotive manufacturers, it facilitates the management of production lines with its barcode scanning capabilities and compatibility with integrated management software. Its drop resistance and sealing make it an ideal choice for manufacturing environments.
- **Building & construction:** In the building industry, the CW-K10 allows engineers and architects to view high-resolution plans on its bright screen and capture data in the field with its integrated cameras.



# 10 INCHES CW-R10

## The Windows 11 pro tablet, suitable for industrial environments

Just like its Android "twin", the CW-J10, this Windows 11 Pro tablet combines strength and adaptability, offering a reliable solution with various extensions to meet various business needs. The CW-R10 is ideal for demanding industrial and logistics environments. With its 12th generation Intel® Core™ i5 processor (option for i7), it offers superior processing power for inventory management, product traceability and field operations. Compliance with MIL-STD 810G ensures drop resistance of up to 1.5 meters, ensuring exceptional durability in harsh industrial environments.



## ACCESSORIES\*

### OFFICE DOCK



### MOBILE DOCK



### STYLUS



\*For full list of accessories, refer to datasheet.



## KEY FEATURES

- **Operating system:** Windows 11 Pro
- **Multifunctional extensions:** NFC, barcode reader, UHF RFID, fingerprint reader for simplified data collection.
- **IP54 standard:** Protection against dust and water jets, ensuring durability in demanding environments.
- **Multiple ports:** Fast DC charging, RJ45 port, SIM card slot, 3.5mm headphone jack, COM port or full-size USB ports for easy interaction with various devices like printers, USB sticks, keyboards, etc.



## EXAMPLES OF PROFESSIONAL APPLICATIONS

- **Technicians and field interventions:** For technicians and field professionals, the CW-R10 ensures reliable performance even in extreme conditions. It enables intervention management, on-site documentation, and real-time collaboration.
- **Transport and logistics:** For drivers and logisticians, the CW-R10 offers precise navigation and real-time communication via its GPS/GNSS capabilities. It facilitates delivery management, vehicle tracking and optimizes the efficiency of transport operations thanks to its dedicated accessories such as vehicle stations.
- **Retail:** In the retail and distribution sector, the CW-R10 makes it easy to manage inventory in real time, take orders in the field, and optimize point-of-sale operations with its 4G LTE and Wi-Fi connectivity capabilities. It ensures seamless interaction with business management systems and offers uncompromising mobility.





# 10 INCHES CW-F10 & CW-H10

Two gems of technology. Whether for industrial use with the CW-F10 or for medical use with the CW-H10, these two fanless models are available in Celeron or Core i7. Their designs include a large handle on top for easy handling. On-demand modules like : hard drive size, 4G, barcode reader or NFC can be easily added.

The CW-H10 tablet, with its antimicrobial coating, is the only medical tablet on the market that has all the necessary certifications for projects in the medical field.

### INDUSTRIES

- Medical
- Manufacturing

**DATASHEET CW-H10**



CW-H10



**DATASHEET CW-F10**



CW-F10



# CW-F10 & CW-H10 ACCESSORIES

## OFFICE DOCK



**DATASHEET**

## WALL DOCK



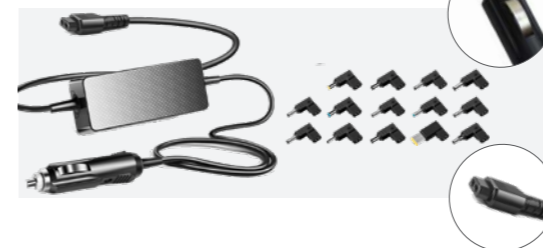
## BATTERIES



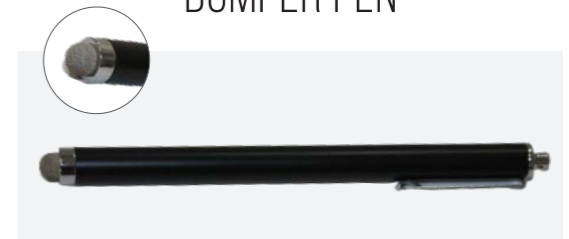
## BASIC AC ADAPTOR



## CHARGER VEHICLE



## BUMPER PEN



## BUMPER PEN CW-H10 AND F10



## ACTIVE RECHARGEABLE PEN



## DIGITIZER PEN





# 12 INCHES CW-N12

## The new 12", thinner, more powerful, while remaining just as robust

The CW-N12 sets a new standard for mobility with its sleek design and exceptional durability. At just 20 mm thick and weighing 1500 g, this tablet combines power and adaptability. Certified MIL-STD 810H and IP66, it is ideal for both office and industrial environments. Versatile, it fits just as easily in a briefcase as it does on a forklift, making it the go-to choice for both "white-collar" and "blue-collar" professionals. With its ultra-sensitive touchscreen and responsive stylus, it offers maximum flexibility for efficient work, even during the most complex multitasking.

With the CW-N12, you never choose the wrong tool. It adapts to all requirements thanks to its powerful Intel® processors and compatibility with your Windows® 11 PRO operating system. Add modules like a barcode reader, an HF RFID reader, or serial ports, and meet all your data collection needs in the field. In the office, placed on its docking station, it transforms into a full desktop computer.



[DATASHEET](#)



Pour la liste complète des accessoires, référez-vous à la fiche produit.



## KEY FEATURES

- **Operating system:** Windows 11 Pro
- **Multifunctional extensions:** NFC, barcode reader, and UHF RFID module for simplified data collection.
- **Battery life:** Dual battery setup with a total weight of 1500 g, featuring hot-swap capability for continuous 24/7 operation without needing to recharge.
- **Discretion and security:** The TPM chip is paired with a camera compatible with Windows Hello® facial recognition. Additionally, both the front and rear cameras are equipped with a shutter cover, ensuring complete discretion.



## EXAMPLES OF PROFESSIONAL APPLICATIONS

- **Automotive expertise/Building damage assessment:** Experts need to work outdoors, often in challenging weather conditions (such as during floods). Whether managing car manufacturers' databases or taking photos of documents or rooftops, the CW-N12 and its active stylus allow precise input and annotation of assessment reports. The tablet's built-in connectivity enables instant transmission of the report and the assessment cost estimate.
- **Construction management:** The construction industry is evolving: stricter regulations, the arrival of BIM (Building Information Modeling) technology, and tighter deadlines. The CW-N12 is an essential tool to maximize the productivity of everyone involved on the construction site. Its power and large screen provide comfortable viewing of traditional plans as well as BIM in augmented reality.
- **Production monitoring:** Whether behind a desk or on the production floor, monitoring and managing human resources and supply chain processes are key to meeting deadlines and ensuring quality. The CW-N12 is the perfect companion for reading and processing real-time information, thanks to its powerful processor and clear display of schedules on its large screen.

# RANGE ATEX





# RANGE ATEX

## ATEX 10 INCHES CW-10EX

Our ATEX certified tablets for Zones 1 and 2 gas, are designed to offer exceptional performance at unbeatable prices. Ideal for use outdoors and in hazardous environments, they feature features such as a 1000 nits display, perfectly readable in bright sunlight, and a built-in 4G module for seamless connectivity, wherever you are.

With more than 20 years of experience in the field of mobility, we put our expertise at your service to offer you equipment perfectly adapted to the growing requirements of your sector.

## ATEX 7 INCHES CW-7EX

### INDUSTRIES

- Gas
- Oil
- Pharmaceutical
- Agriculture

### ACCESSORIES CW-10EX

- OFFICE DOCK
- MOBILE DOCK
- CAR CHARGER
- HANDSTRAP

### ACCESSORIES CW-7EX

- OFFICE DOCK
- HANDSTRAP
- MAGNET SNAP MOUNT FOR VEHICLE
- CAR CHARGER



[DATASHEET](#)



[DATASHEET](#)

# RANGE ATEX



## ATEX 6 INCHES CW-6EX

Discover the ATEX version of our CW-6 phablet, a versatile solution designed to meet the specific needs of potentially explosive environments, thanks to its ATEX certification. With an IP67 rating and compliant with MIL STD 810G, this phablet guarantees exceptional strength and reliability, even under the most demanding conditions.

For optimum adaptability, the CW-6EX can be equipped with optional modules such as a barcode reader, NFC reader or even a fingerprint reader. Whether for repeated barcode scanning operations, collecting or entering information, the CW-6EX delivers fast and efficient performance. Its 1000 nits brightness screen, allowing easy reading even in full sun, makes it the ideal companion for all your professional tasks, whether indoors or outdoors.



[DATASHEET](#)



**Always by your side**



SMART SOLUTIONS FOR PROFESSIONALS

361 Avenue des Romarins  
34130 Saint-Aunès  
+33 (0)4 99 52 68 88  
[contact@yatoo.info](mailto:contact@yatoo.info)